

ANNUAL REPORT

FISCAL YEAR 2017 / 2018





OUR MISSION

The Pennsylvania Coalition Against Domestic Violence (PCADV) is a statewide collaborative membership organization committed to ending intimate partner violence and all forms of violence against women.

Founded in 1976, PCADV is the oldest statewide domestic violence coalition in the nation. Each year, its network of 59 local domestic violence programs provides free and confidential direct services to nearly 90,000 victims and survivors of domestic violence and their children in all 67 counties of the Commonwealth. Together, local programs and the statewide Coalition work in collaboration to deliver a continuum of services, support, and systems to help victims and survivors find safety, obtain justice, and build lives free of abuse.

PCADV administers the state contract for domestic violence services through the distribution of state and federal funds to its network of local domestic violence programs, and through the implementation and monitoring of standards to meet the needs of victims and survivors.

FROM OUR CEO

Dear PCADV colleagues & supporters,

I'm pleased to share with you the Coalition's FY 2017-18 annual report. While FY 2017-18 was a transitional period, exciting new activities and partnerships were developed as illuminated in this report. Since the 2017-18 fiscal year was my first year with the Coalition, I spent time consulting with member delegates, PCADV staff, and collaborators in order to build upon an already strong portfolio of activities.

In FY 2017-18 we also ushered in some new ways of approaching our work, including more transparency in operations and in communications with our members and donors. PCADV faced some operational challenges that needed fresh perspectives for moving our unique mission forward. I'm delighted to say that I had a great deal of assistance and support from the staff, board of directors, member programs, and colleagues in steering the Coalition in a new direction.

Further, we were successful in applying for some major grant projects including the Centers for Disease Control & Prevention (CDC) DELTA grant, which is focused on prevention, and the Victims of Crime Act statewide legal services helpline. These projects have allowed us to engage new staff to assist in these statewide efforts aimed at preventing intimate partner violence and helping with resources for legal issues related to victimization.

FY 2017-18 was another strong year for our **training and technical assistance programs**. PCADV conducted **132 trainings** for **6,756 participants** and responded to **1,748 technical assistance requests**. The **Civil Legal Representation (CLR) Initiative** served a total of **3,140 clients** and obtained **\$242,138.44 in court-ordered support** for survivors and their children. Staff also participated in over **60 collaborative meetings**. For the same period,

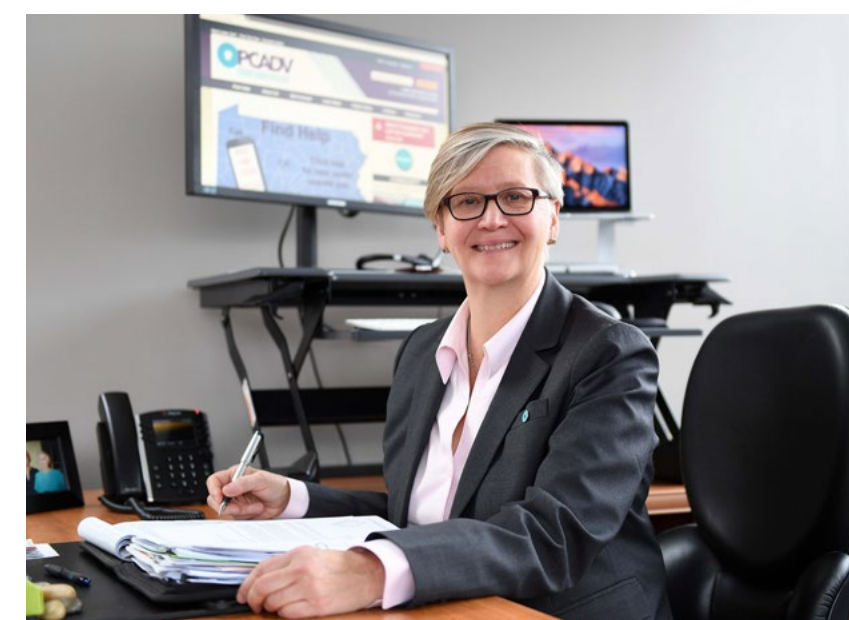
PCADV subcontractors assisted domestic violence survivors' efforts to live within safer surroundings through the **Relocation Program**. Additionally, **1,389 adult clients** and their **1,718 dependents** (for a total of **3,107 individuals**) received financial assistance to help them relocate away from abusers or remain safely in their homes after abusers have relocated. A total of **\$928,451** was spent throughout the year for relocation efforts.

With respect to financial stewardship, I'm delighted to report that we improved our net cash assets by over \$132,000 from FY 2016-17 to FY 2017-18. We accomplished this goal by vigilant grants management, by raising more general operational funds, and by tightening our business operations, all in an effort to maximize funding for our programmatic activities.

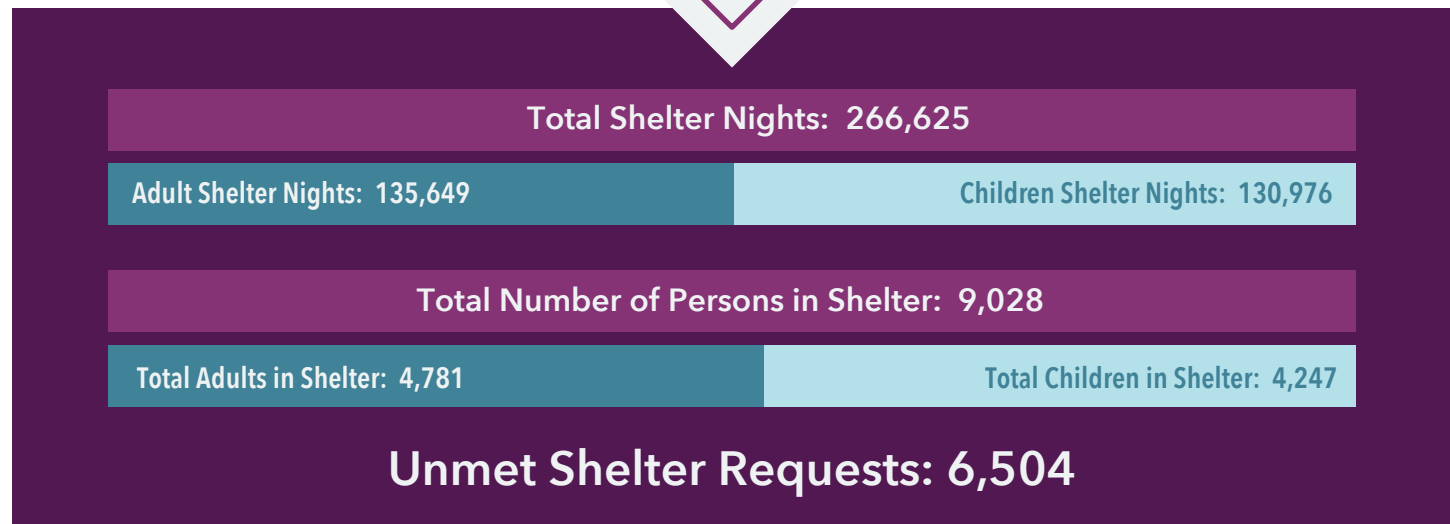
As we look forward to FY 2019, I'm excited to build upon both the Coalition's strong history and recent advancements that will position us to take the mission to new heights. I'm grateful for all of our colleagues, donors, volunteers, and staff who have essential roles in our success—we are a stronger Coalition together.

Warm regards,

Susan Higginbotham, MEd
Chief Executive Officer



PROGRAM SERVICES



PROGRAM HIGHLIGHT

MEDICAL ADVOCACY PROGRAM (MAP)

The intersection of domestic violence and healthcare creates an opportunity to promote safety.

The relationship between domestic violence agencies and the healthcare community is tantamount to increasing the identification of domestic violence victims seeking healthcare services and connecting those survivors to necessary services and support.

PCADV's Medical Advocacy Program (MAP) promotes collaborative partnerships between community-based domestic violence programs and local health care systems, sites and providers to improve responses to domestic violence. MAP provides funding to 35 domestic violence programs to engage in health systems advocacy through medical and domestic violence advocates. The collaboration promoted by MAP is vital, as a medical visit may be the only opportunity for a survivor to connect with a domestic violence program or other necessary resources.

Medical advocates facilitate and support healthcare communities in the implementation of screening and referral policies and protocols to enhance health outcomes and promote violence prevention strategies. In addition to systems advocacy, medical advocates provide information, education, resources, trainings and technical assistance to healthcare communities across Pennsylvania. On average, medical advocates conduct 1,500 trainings for approximately 38,000 medical personnel and allied staff per year. These trainings result in increased referrals to domestic violence programs.

PCADV's Medical Advocacy Program (MAP) promotes collaborative partnerships between community-based domestic violence programs and local healthcare systems, sites and providers to improve responses to domestic violence.



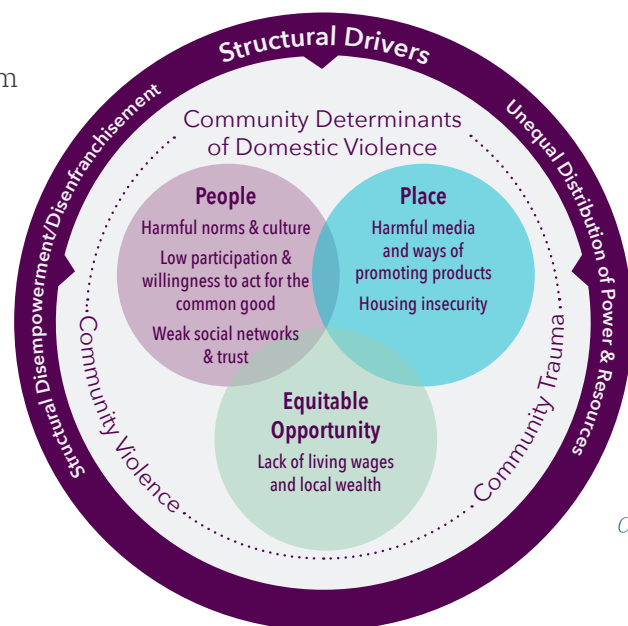
In March 2018, PCADV was officially awarded the Center for Disease Control and Prevention Domestic Violence Prevention Enhancement and Leadership Through Alliances Impact (DELTA Impact) grant.

The DELTA Impact grant funds state domestic violence coalitions to implement community and societal level primary prevention efforts to decrease risk factors and increase protective factors related to intimate partner violence.

This award is extremely competitive and is distributed to only ten out of 56 possible state and tribal Coalitions. PCADV's Prevention Team is honored to be a recipient of these funds. With this award, **PCADV will have \$2.5 million over five years to implement the following projects:**

- 1 Implementation of locally-developed Be the Change curriculum and hot-spot mapping, which identifies perceived safe zones, in schools in Columbia and Montour counties in partnership with The Women's Center, Inc. of Columbia and Montour Counties.
- 2 Implementation of Coaching Boys into Men in Chester County in partnership with Domestic Violence Center of Chester County.
- 3 Analysis of comparable worth policies in Pennsylvania, to compare with national best practices and identify any gaps.
- 4 Updates to the current 5-year prevention plan, and development of a new, 5-year prevention plan.

For this grant, the Prevention Team based programmatic choices on the THRIVE (Tool for Health and Resilience in Vulnerable Communities) Model. Under this model, PCADV's Prevention Team and partner programs will implement community and societal level prevention work that creates healthy, safe and equitable environments.



Prevention Institute. (2017). *A Health Equity and Multisector Approach to Preventing Domestic Violence*. Oakland, CA: Parks, Castaldi, Davis, Price, Somji.

During this fiscal year, PCADV continued to advocate for legislation that improves the safety and quality of life for survivors of domestic violence throughout the Commonwealth, with its domestic violence homicide legislation at the forefront.

Homicide prevention has been at the core of PCADV's public policy initiatives for the last decade. PCADV, its member programs, and an engaged coalition worked relentlessly to ensure this legislation remained a priority for the General Assembly. In spring, 2018, SB 501, introduced by Senator Tom Killion, unanimously passed the Senate. Before breaking for the summer, the House failed to vote on the House version of the bill, HB 2060, introduced by Representative Margueritte Quinn, but PCADV and its coalition partners remained poised to push for passage through the end of the session.

PCADV's Government Affairs team continues to build relationships with legislators, staff and other like-minded organizations in an effort to increase our presence at the State Capitol. Working closely with legislators and other allies, we hope to remain a resource and a formidable force as we work to improve all services and systems for survivors of domestic violence in Pennsylvania.



MEMORIAL FUNDS

In fiscal year 2017-18, the unfortunate loss of two women led to the creation of two new memorial funds; one dedicated to public policy advocacy and reform and the other for prevention efforts for young teens and girls. Both funds are devoted to preserving the legacies of remarkable women and represent a lasting commitment to ending domestic violence.

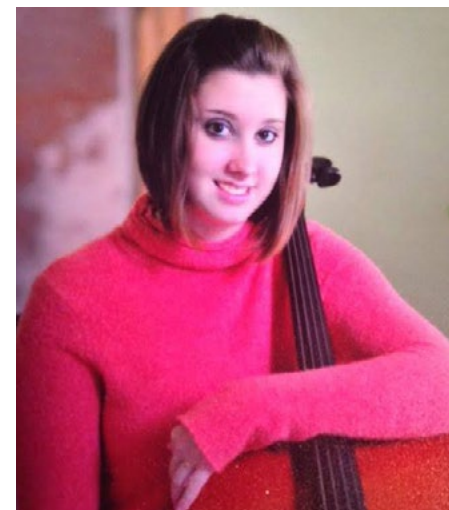
HONORING VICTIMS, SURVIVORS, AND LEADERS OF THE MOVEMENT TO END DOMESTIC VIOLENCE

CAROLE ALEXY LEGACY FUND

Carole Alexy worked for more than 40 years as a dedicated advocate to end violence against women. Carole began her career early in the domestic violence movement. In 1976, she helped found and served as the Executive Director of A Woman's Place, the local domestic violence program in Bucks County. She later became president of the PCADV board and joined the staff in 1983, where she worked for 34 years. In recognition of her career committed to improving the lives of women and their families, Carole was awarded the Woman of Courage Award by the Lutheran Settlement House in Philadelphia in 2017.

Carole Alexy passed away on December 10, 2017. In memory of Carole's steadfast work on behalf of victims and survivors of domestic violence, the PCADV Board of Directors, in collaboration with her family, established The Carole Alexy Legacy Fund. Contributions to the Fund are used to support public policy reform to improve access to safety, justice and autonomy for victims and survivors of domestic violence and their families.

Carole Alexy



Diana Heilner

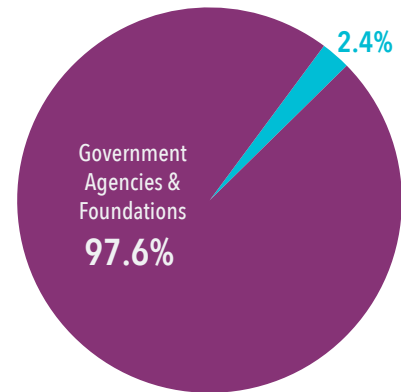
DIANA MEREDITH HEILNER MEMORIAL FUND

Diana Meredith Heilner was a beloved daughter, mother, and friend. An Elizabethtown, PA native, she was a Licensed Practical Nurse and in her free time enjoyed music, including singing and playing the cello. Tragically, at the age of 25, her life was cut short as a result of domestic violence. The Diana Meredith Heilner Memorial Fund was created by her family in her memory to support the advancement of domestic violence prevention efforts for young teens and girls.

FINANCIAL STATEMENTS

JULY 1, 2017- JUNE 30, 2018

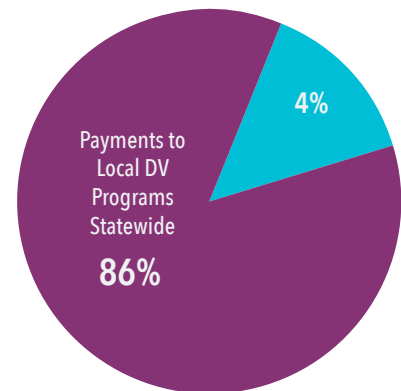
PCADV REVENUE



TOTAL REVENUE: \$28,885,976

- Government Agencies & Foundations: **\$28,201,127**
- All other income: **\$684,849**

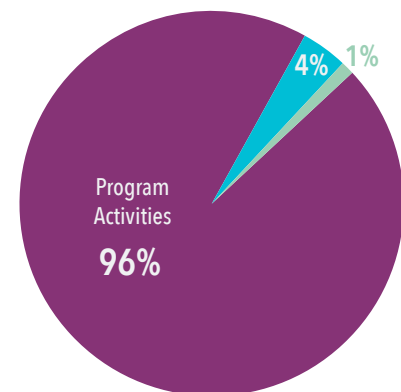
PCADV FUNDING DISBURSEMENT



TOTAL DISBURSEMENTS: \$28,839,087

- Payments to Local DV Programs Statewide: **\$24,944,762**
- Coalition Operating Budget: **\$3,894,325**

PCADV FUNCTIONAL EXPENSES



TOTAL FUNCTIONAL EXPENSES: \$28,839,087

- Program Activities: **\$27,470,374**
- Management & Admin: **\$1,158,605**
- Fundraising & Lobbying: **\$210,108**

STATEMENT OF FINANCIAL POSITION

Current Assets	\$3,123,110
Non-current Assets	\$21,851
Fixed Assets (net of depreciation)	\$36,736
Total Assets	\$3,181,697
Current Liabilities	\$1,612,623
Total Net Assets	\$1,569,074
Total Assets	\$3,181,697

STATEMENT OF ACTIVITIES

REVENUE, GAINS & OTHER SUPPORT

Contracts	
Government Agencies & Foundations	\$28,201,127
Contract Administration	\$445,033
Donations	\$153,665
Miscellaneous/Other Income	\$86,151
Total Revenues, Gains & Other Support	\$28,885,976

EXPENSES

Salaries	\$1,838,307
Employee Benefits	\$609,648
Consultants	\$314,170
Advertising	\$63,348
Accounting & Auditing	\$19,000
Equipment Rental & Maintenance	\$80,190
Business Insurance	\$13,556
Memberships	\$84,666
Miscellaneous	\$34,100
Occupancy	\$309,773
Office Supplies & Expenses	\$141,932
Meeting Expenses	\$15,410
Printing / Photocopy	\$165,966
Staff Development	\$21,582
Subrecipients	\$24,944,762
Telephone	\$33,908
Travel & Conferences	\$134,081
Depreciation	\$14,688
Total Expenses	\$28,839,087

Change in Net Assets	\$46,889
Net Assets at Start of Year	\$1,522,185
Net Assets at End of Year	\$1,569,074

Condensed based on audit compiled by MaherDuessel. Audited financial statements are available at PCADV.org

THANK YOU TO OUR DONORS

Abraham C. Treichler Lodge 682	Charlotte F. Brown	Gina D'Alfonso	Dorothy Fulton	Hershey Entertainment & Resorts Co.	Louis L. Leff
Abuse & Rape Crisis Center	Shelly Renee Brown	Bret Daniels	Tiffany Fultz	Susan Higginbotham	Christine Leinbach
Amy Addams	Barry J. Brutko	Marsha Davis	Catherine Gannon	Joanne High	Melissa Little
Aetna Foundation, Inc	Barbara Bryant	Jennifer DeBell	Ellen L. Garvin	Highmark	Robert Lomison
Kristen Albert	Patricia Buckley	Susan Derer	John Michael Gdula	Vicki Hill	Linda Lyons King
Christopher Alexy	Tracy Burke	Annemie Deruytter	Ann Geist	Dauvey Hoffman	Maria Macaluso
Ally Financial, Inc.	Juliana Burke	Thomas DeWall	George M. Leader Family Corporation	Dale Hoke	Kathy MacNett
Alpine Packaging, Inc.	Lenore Bushlin	Diana M. Reed & Associates, P.C.	Reena Gherwada	Carolyn Holleran	Richard Macool
Nicole Althouse	Paula Bussard	Doris Ditzler	Giant Eagle, Inc.	Tom Hollerbach	Jeannee Mallow
Kerry Anderson	Ariel E. Cadoff	Cheryl Dively	Dana Gigler	Joel Hubbard	Kathy Manderino
Taylor Andrews	Cheryl Capri	Ricci Doctrow	Kelly Givens	Carol Husa	Margaret Marcinik
Angeion Group	Barbara Cardinale	Domestic Violence Services of Cumberland & Perry Counties	Donna Glover	J & J Fire Protection Company Inc.	Lisa Zeidner Marcus
Mary Antes	Jeannette M. Carley	Donnie G. Boyer, Inc.	Sally Winston Goldhaber	J.P. Bruemmer Charitable Lead Trust	Markosky Engineering Group, Inc.
Anne Ard	Sally Casey	Dianne Douthat	Robert Goodling	M. Jenkins	Sue Martin
William Aungst	Robert Cassel	Anita Dunn	Barbara Gorenstein	John Jewett	Michael Martinelli
Avon Grove High School	Larry Ceisler	Gale DuPont	Sarah Grambs	Jennifer Johnson	Kathy McCormac
Bank of Landisburg	Ceisler Media & Issue Advocacy	Marsha B. Dutton	Beth Grassel	Sharon Jones	Sharon McKee
Harold Bechtold	Mary Garcia Charumilind	Tammy Ebert	Majorie Cohen Greenberger	Robert Kay	Malvena McLeod
Nancy Becker	Hugh Chekemian	Elyse Eichner	Gary Gregory	Mary Keenan	Ronald Mease
Dolores Becker	Christ Church, United Church of Christ	Ann Emmerling	Paula Griffith	Valerie Ketchen	Marilyn Meeker
Jason Benion	Church & Dwight Employee Giving Fund	Anne English	Maggie Groff	Mary Ann Killian	Kathleen Mehosky
Joan Benso	Augustus Cileone	Erie Insurance	Amy Brennan Grois	Emily Kim	Sam Milkes
Janet Berardelli	Rosemarie Clapp	Cheryl Lyn Errichetti	Sheila Gross	Thomas King	Elaine L. Miller
Georgia Berner	Clinton County Women's Center	Constance Etters	Lois Hagarty	Elizabeth Kirk	Maureen Miller
Virginia Bishop	Phyllis L. Cohen	Lance & Lynn Farber	Kristin Halterman	Nancy Kitzmiller	Miriam Miller
Rabbi Aaron Bisno	Phyllis L. Cohen	William Fazio	William Hamilton	Deborah Klehr	Sue Milnes
Vashti Bledsoe	Thomas Colestock	Celia Feinstein	Terri Hamrick	Thomas Klinger	Wendy Moffat
Andrew Bloomgarden	Julie Colton	Blondena Ferguson	Judith Harpur	Kathy Kolbert	Jane Moravitz
Katherine Bobeck	Columbia Gas of Pennsylvania	Anna Fetter	Lawrence Hawkins	Mary Koppel	Walton Moyer
Carol Bower	Combined Federal Campaign	Tina Fidler	Health Partners Plans	Koser Jewelers	Phyllis Mundy
Jo Ellen Bowman	Carolyn Comitta	Nancy Fink	Ernest Heffner	Marsha Lackner	Barbara Murphy
Jean Brandt	Lu Conser	First National Bank of Pennsylvania	Gerald Heilner	Paul Lantz	Debora Musolin
Irene Brantley	Sean Crampsie	David Forney	Meredith Heilner	Laurel House	Sandy Musser
Michael Broda	Crisis Center North	Mary Franco	Betty Helmer	Laurelwood Apartments & Townhomes	Matt Naeger
Brian Brooking	Pam Curl	Beverly Frantz	Kevin Henry	Amy Leader	National Network To End Domestic Violence
Dorothy Brown	Ann Curley	James Frickmann	Henry Luce Foundation	Lynette L. Lederman	NewAge Industries

THANK YOU TO OUR DONORS (CONT.)

BOARD OF DIRECTORS

JULY 1, 2017- JUNE 30, 2018

Northeastern Women of Today
Olweiler Insurance Agency
Susan Osthoff
Joanna Otero-Cruz
PA Cemetery Cremation
& Funeral Association
Penn National Insurance
Employees' Association
Pennsylvania Assoc. of School
Nurses & Practitioners
Pennsylvania Dental Hygienists
Association, Inc.
Pennsylvania Funeral
Directors Association
Sharon L. Perelman
Karen Kraus Phillips
Valerie Plant
Lori Plung
Catherine Raphael
Karen Reale
Edwin Rice
Michelle Robinson-Ritter
Wendy Roeder
Stacy Rohrer
Ellen Roth
Cynthia Royer
Bonnie L. Rubin
Susan Rubin
Peg Ruddy
Elizabeth Rushong
Judy Ruskowski
Diane Ryan
Samuel R. Ryder
Jacqueline Savage
Keith Scheuing
Craig & Deanna Schwalm
Lori Sellers

Pamela Sevcik
Margaret Shaffer
Carol Sharp
Shenandoah Biotechnology, Inc.
Donna Sherwood
Steve Silverman
Diane L. Silverman
Stephanie Smith
Margaret Sobolewski
Solomon & Sylvia Mendel
Charitable Trust
John Sommer
Alicia Sosman
Fern L. Steckel
Rachel Stolzer
Janice Stouffer
Joanna M. Strall
Julianne Strickler
Vera Stuchinski
Cris Sullivan
Olivia Susskind
Susan Swope
Lori Sywensky
Barbara L. Tabachnick
Bridget Talone
Laura Taylor
TE Connectivity
Randi Teplitz
Rachel Tereska
The Donald B. & Dorothy L.
Stabler Foundation
The Heinz Endowments
The Law Firm of Peters & Wasilefski
The Pittsburgh Foundation
The Tom & Lauren Zimmerman
Family Fund
The Wawa Foundation Inc.

D. Kathlee Tinsmith
Amy Towne
Carol Trego
Truist
Bruce Tychinski
United Way of Greater Philadelphia
& Southern New Jersey
UPMC, Marketing Operations
& Charitable Giving
Mary Valenzuela
Annette Van Noy
Pat Vance
Lorie Verderame
Inika Vimal
Robert Waller
Sue Walther
Michael Warfel
Weaver Insurance Group, Inc.
Deborah L. Weingarden
Andrew Wells
Wells Fargo Foundation
Mary Weston
Ariana Wheeler
Mary Jo White
Robert Whitmoyer
Carol Williams
Sharon Wilson
Robert Winston
Women In Need
Susan Worman
WPGR
Alyssa Wroblewski
Judith Wuerstle
John Yeatman
Avis Yuni
Robert Zech
Debra Zeigler

Michelle Robinson-Ritter

President
Executive Director,
Domestic Violence Services
of Southwestern PA
Washington, PA

Brian S. Brooking

Vice President
Governance Committee Chair
Vice President, Residential
Mortgage Lending,
Woodlands Bank
Williamsport, PA

Anne Ard

Secretary
Executive Director,
Centre Safe
State College, PA

Joanna Otero-Cruz

Treasurer
Finance Committee Chair
Deputy Managing Director of
Community Services,
City of Philadelphia
Philadelphia, PA

Shelley Renee Brown, MEd

Personnel Committee Chair
Doctoral Candidate
& Academic Counselor,
Penn State University
State College, PA

Rabbi Aaron Bisno

Frances F. & David R. Levin
Senior Rabbinic Pulpit
Rodef Shalom Congregation
Pittsburgh, PA

Jo Ellen Bowman

Executive Director,
HAVIN, Inc.
Kittanning, PA

Julie R. Colton, Esquire

Voelker & Colton, LLC
Pittsburgh, PA

Gary L. Gregory

Sherborn, MA

Amy Brennan Grois

Director, Client
Solutions, Healthcare,
Expert Global Solutions
Mount Laurel, NJ

Terri Hamrick, MNM

Executive Director,
Survivors, Inc.
Gettysburg, PA

Susan Higginbotham, MEd

Ex Officio
Chief Executive Officer,
PCADV
Harrisburg, PA

Tom Hollerbach

Hershey, PA

Thomas King

Assistant Borough Manager
for Public Safety
State College, PA

Linda Lyons King

Executive Director,
SafeNet Domestic Violence
Safety Network
Erie, PA

Karen Kraus Phillips

Vice President, Corporate
Marketing Services,
Erie Insurance
State College, PA

PCADV LOCAL PROGRAMS

PCADV has a statewide network of direct-service, local domestic violence programs that are ready to help.

A Safe Place, Inc.
Forest and Warren Counties

A Way Out
Potter County

A Woman's Place
Bucks County

Abuse & Rape Crisis Center
Bradford County

Alice Paul House
Indiana County

Alle-Kiski Area HOPE Center, Inc.
Allegheny & Westmoreland Counties

AWARE, Inc.
Mercer County

Blackburn Center
Westmoreland County

C.A.P.S.E.A., Inc.
Elk and Cameron Counties

Center for Victims
Allegheny County

Centre County Women's
Resource Center
Centre County

Clinton County Women's Center
Clinton County

Community Action, Inc./
Crossroads Project
Jefferson and Clearfield
Counties

Congreso De Latinos Unidos, Inc.
Philadelphia County

Crisis Center North, Inc.
Allegheny County

Crisis Shelter of
Lawrence County
Lawrence County

Victim Services of Family Services, Inc.
Blair County

Domestic Abuse Project of
Delaware County, Inc.
Delaware County

Domestic Violence Center
of Chester County
Chester County

Domestic Violence Intervention
of Lebanon County, Inc.
Lebanon County

Domestic Violence Service
Center, Inc.
Luzerne and Carbon Counties

Domestic Violence Services of
Cumberland & Perry Counties
Cumberland and Perry Counties

Domestic Violence Services of
Lancaster County
Lancaster County

Domestic Violence Services
of Southwestern PA
Washington, Greene and
Fayette Counties

HAVEN of Tioga County, Inc.
Tioga County

HAVIN, Inc.
Armstrong County

Huntingdon House
Huntingdon County

Laurel House
Montgomery County

Lutheran Settlement House
Philadelphia County

PPC Violence Free Network
Venango County

SAFE (Stop Abuse for Everyone), Inc.
Clarion County

Safe Berks
Berks County

Safe Journey
Erie County

SafeNet Domestic Violence
Safety Network
Erie County

Schuylkill Women in Crisis
Schuylkill County

Sullivan County Victim Services
Sullivan County

Survivors, Inc.
Adams County

The Abuse Network
Mifflin and Juniata Counties

Transitions of PA
Union, Snyder, and
Northumberland Counties

Turning Point of Lehigh Valley, Inc.
Lehigh and Northampton
Counties

Victim Outreach Intervention Center
Butler County

Victims Resource Center
Wyoming County

Victims' Intervention Program
Wayne County

Women Against Abuse, Inc.
Philadelphia County

Women In Need, Inc.
Franklin and Fulton Counties

Women In Transition
Philadelphia County

Women's Center & Shelter
of Greater Pittsburgh
Allegheny County

Women's Center of Beaver County
Beaver County

The Women's Center, Inc. of
Columbia/Montour
Columbia and Montour Counties

Women's Center of
Montgomery County
Montgomery County

Women's Help Center, Inc.
Cambria and Somerset Counties

Women's Resource Center, Inc.
Lackawanna and
Susquehanna Counties

Women's Resources of Monroe
County, Inc.
Monroe County

Women's Services, Inc.
Crawford County

Your Safe Haven, Inc.
Bedford County

YWCA Bradford
Victims' Resource Center
McKean County

YWCA NorthCentral PA
Wise Options
Lycoming County

YWCA of Greater Harrisburg
Violence Intervention
& Prevention Services
Dauphin County

YWCA York/ACCESS
York County



National Domestic Violence Hotline: 1.800.779.7233

National Teen Dating Violence Hotline: 1.866.331.9474

Visit [PCADV.org](https://www.pcadv.org) to find local programs
by location and services offered.